



IRW Systems Limited  
concept to realisation



**Microsoft**  
GOLD CERTIFIED  
Partner

"IRW were efficient and professional which enabled us to implement the solution with a minimum of disruption to staff and maximum benefit to the organisation."



t. 0141 889 3088 (North)  
t. 0207 873 2268 (South)  
Web. [www.irw.co.uk](http://www.irw.co.uk)  
Email: [enquiries@irw.co.uk](mailto:enquiries@irw.co.uk)

## Marks & Clerk — Share Point

**CUSTOMER COMMENT:** "I'd like to take this opportunity to thank IRW for their professional and energetic engagement on this Microsoft Office SharePoint Server 2007 (MOSS) project. IRW were always amenable to late changes, and client requests were always dealt with in a courteous and "can do" manner. We will definitely be considering IRW for future projects." **Nick Jefferies**  
**OneFirm, Marks & Clerk**

**THE CUSTOMER:** Marks and Clerk are a leading group of global patent and trade mark attorneys. They provide a full range of integrated intellectual property services covering patents, trade marks, designs, copyright and domain names. They are consistently ranked as market-leaders with award-winning services and their expanding growth has driven the need for a mechanism for geographically dispersed teams to work collaboratively and share documentation.

**THE REQUIREMENT:** Marks & Clerk required a portal that would provide a consistent mechanism to organise, categorise, navigate and manage a large number of documents and provide a secure location for storage.

**THE SOLUTION:** Marks and Clerk selected Microsoft Office SharePoint Server 2007 as it was recognised as the market leading tool for collaborative work spaces and organisational portals. The IRW Consultancy Team provided the technical analysis of the requirements, hardware, software and optimal configuration for a MOSS 2007 solution. Recommendations were given that would meet Marks & Clerk's current and future requirements, allowing appropriate robustness and scalability.

IRW's Technical Resources, experienced in SharePoint, delivered a site structure, security model and provided assistance in installing and configuring MOSS 2007 on Marks & Clerk's infrastructure for the purposes of the programme. Detailed guidelines in customising web part development for MOSS were delivered and undertaken alongside Marks & Clerk's staff and a third party team to ensure appropriate knowledge transfer. User training and documentation were also provided, covering administration and configuration aspects of SharePoint 2007. IRW also undertook the customisation of the SharePoint user interface. By developing the SharePoint master page, layouts, themes and CSS IRW's Graphic Design Team developed an Intranet GUI that incorporated Marks & Clerk identity, colours and styles.

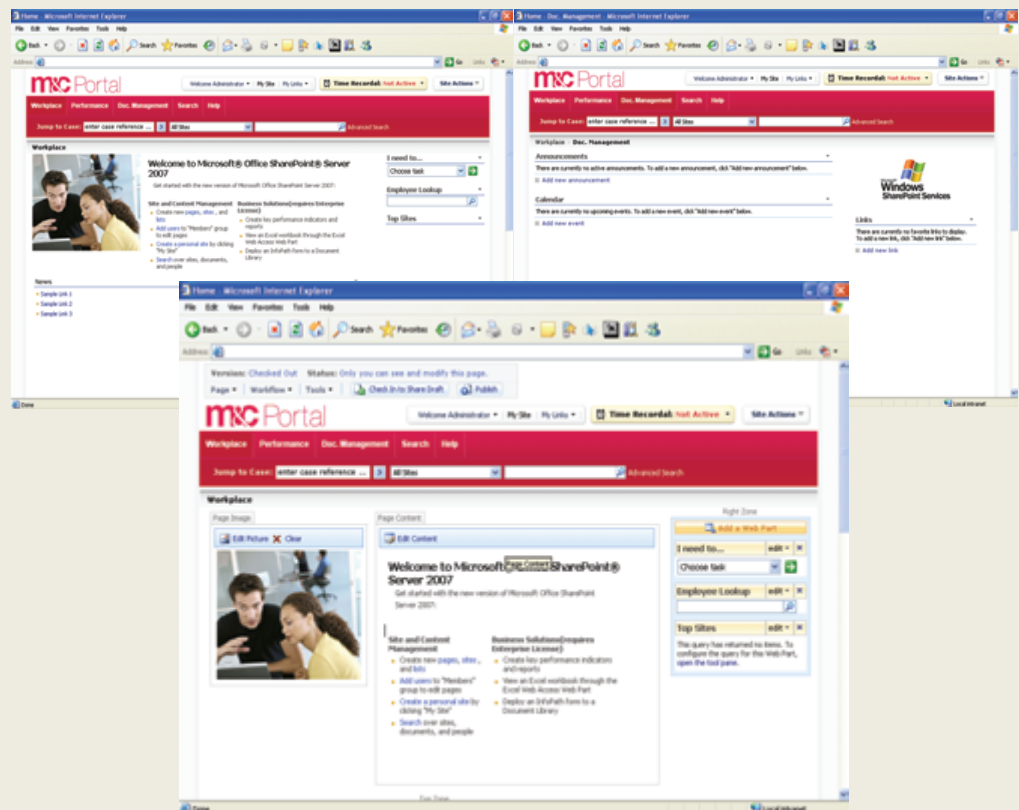


"IRW were efficient and professional which enabled us to implement the solution with a minimum of disruption to staff and maximum benefit to the organisation."

#### **BUSINESS BENEFITS:**

Key deliverables and Benefits from IRW Systems included:

- Ensuring that an appropriate infrastructure was put in place for MOSS 2007 in Marks & Clerk.
- Provided detailed documentation as a collection of resources which allows staff to rapidly find critical information in the aspects of custom web part development, MOSS installation and configuration
- Delivering a fully functioning master page and site templates to support Marks & Clerk activities
- Providing consultancy on logical data model to multiple business systems
- Provide appropriate solutions on implementation of the portal which can be performed in an intuitive fashion from within the portal itself
- Providing consultancy on "best practices" to allow the portal to serve as a jumping-off point for more complex tasks
- Provide ongoing support and advice



t. 0141 889 3088 (North)  
t. 0207 873 2268 (South)  
Web. [www.irw.co.uk](http://www.irw.co.uk)  
Email: [enquiries@irw.co.uk](mailto:enquiries@irw.co.uk)